

FZG 5HP/7.5HP Submersible Grinder Pumps



SPECIFICATIONS:

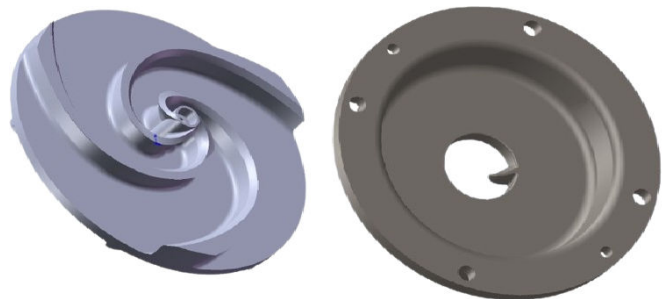
- DISCHARGE** Horizontal Flange, Combination 2.5" & 3"
- LIQUID TEMPERATURE** .. 120 degrees F (Continuous)
140 degrees F. (Intermittent)
- VOLUTE** Cast Iron ASTM A-48, Class 30
- MOTOR HOUSING** Cast Iron ASTM A-48, Class 30
- SEAL PLATE** Cast Iron ASTM A-48, Class 30
- SHREDDING RING** Hardened 440C Stainless Steel
56-60 Rockwell C
- GRINDER IMPELLER** Hardened 440C Stainless Steel
56-60 Rockwell C
- SHAFT** 420 Stainless Steel
- O RING** Buna-N
- CORD ENTRY** Triple Sealed Design
Compression Grommet – Outer Jacket Seal
Epoxy Potted – Inner Conductor Seal
Butt Connector – Inner Wire Strand Wicking Blockage
- SEAL: Motor Side**..... Rotating Face - Graphite
Stationary Face - Silicon Carbide
- Pump Side**..... Rotating Face - Silicon Carbide
Stationary Face - Silicon Carbide
Elastomer - Buna -N
Hardware - 300 Series Stainless
- UPPER BEARING** Single Row, Ball, Oil lubricated
- LOWER BEARING** Single Row, Ball, Oil Lubricated
- MOTOR** 5 & 7.5 HP, 3450 RPM, 60 Hz
Dual-voltage, 230 / 460 volts, Oil Filled, Class F
On-Winding temperature sensor and water leakage probe
- OPTIONAL EQUIPMENT:** Cord Length & Impeller Trim

APPLICATIONS:

The FZG series centrifugal grinder/Chopper pumps easily handle residential, commercial or industrial sanitary waste, reducing it to a fine slurry. The pump is designed for use in pressure sewer applications or any piping network. The recessed vortex impeller design provides trouble free, non-overloading operation over the entire performance curve.

The hardened stainless steel grinder assembly provides many years of dependable operation.

Model: FZG-53, 230V/460V
FZG-73, 230V/460V

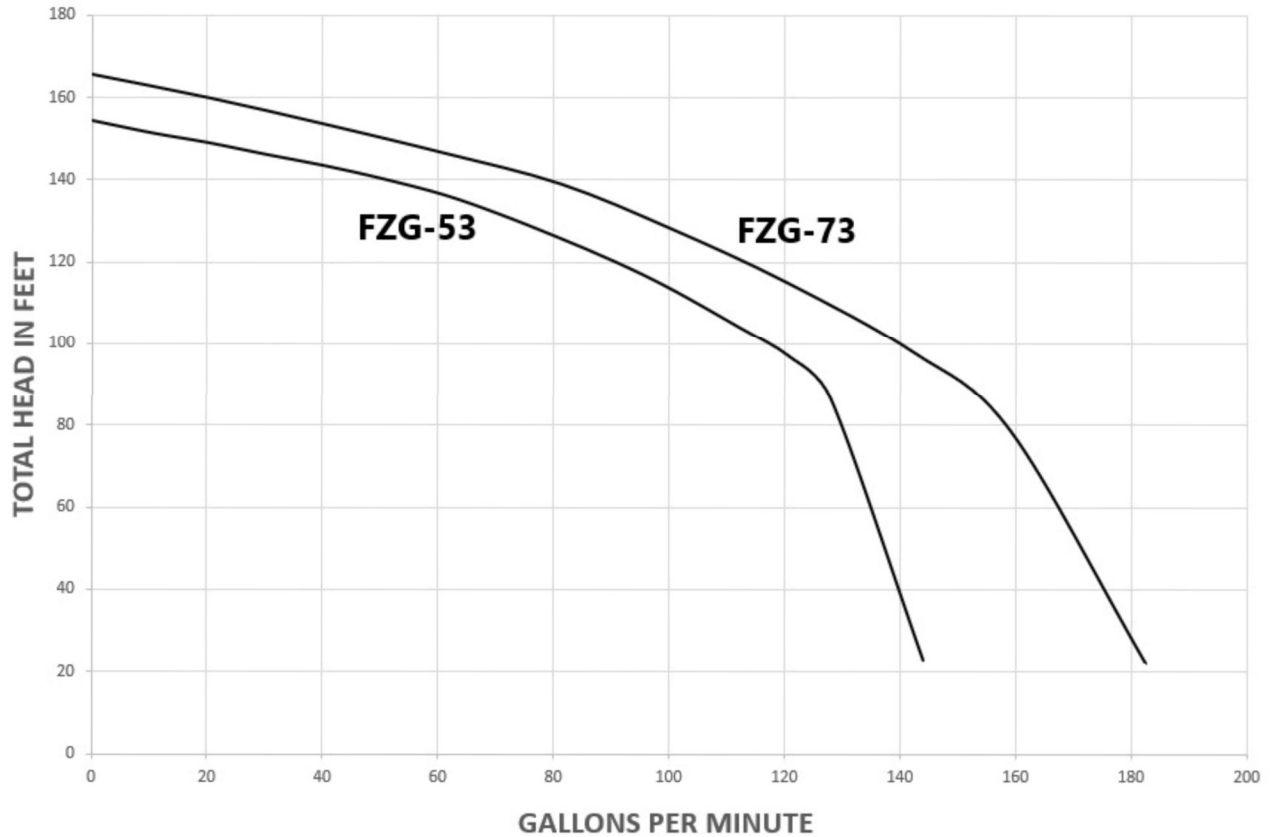


ELECTRICAL DATA:

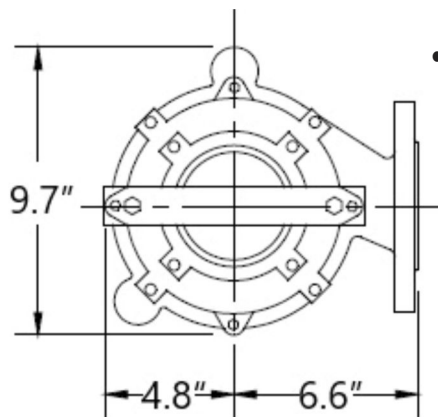
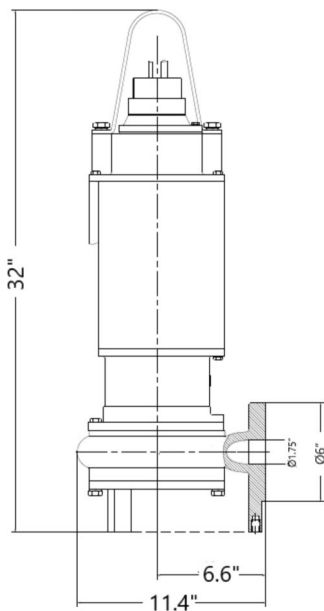
MODEL	HP	Volt.	Ph/Hz	RPM	Full Load Amps	Impeller Size (mm)	Weight (lbs)
FZG-53	5	230/460	3/60	3450	22/11	152.4	191
FZG-73	7.5	230/460	3/60	3450	27/13.5	165.1	195

FZG 5HP/7.5HP Submersible Grinder Pumps

PERFORMANCE CURVE



PUMP SIZE



KEY FEATURES:

- Strong Oil filled motor
- Dual Silicon-Carbide Mechanical Shaft Seals
- Pressed-In Motor with Internal Overload Protection
- Internal Moisture Detection

